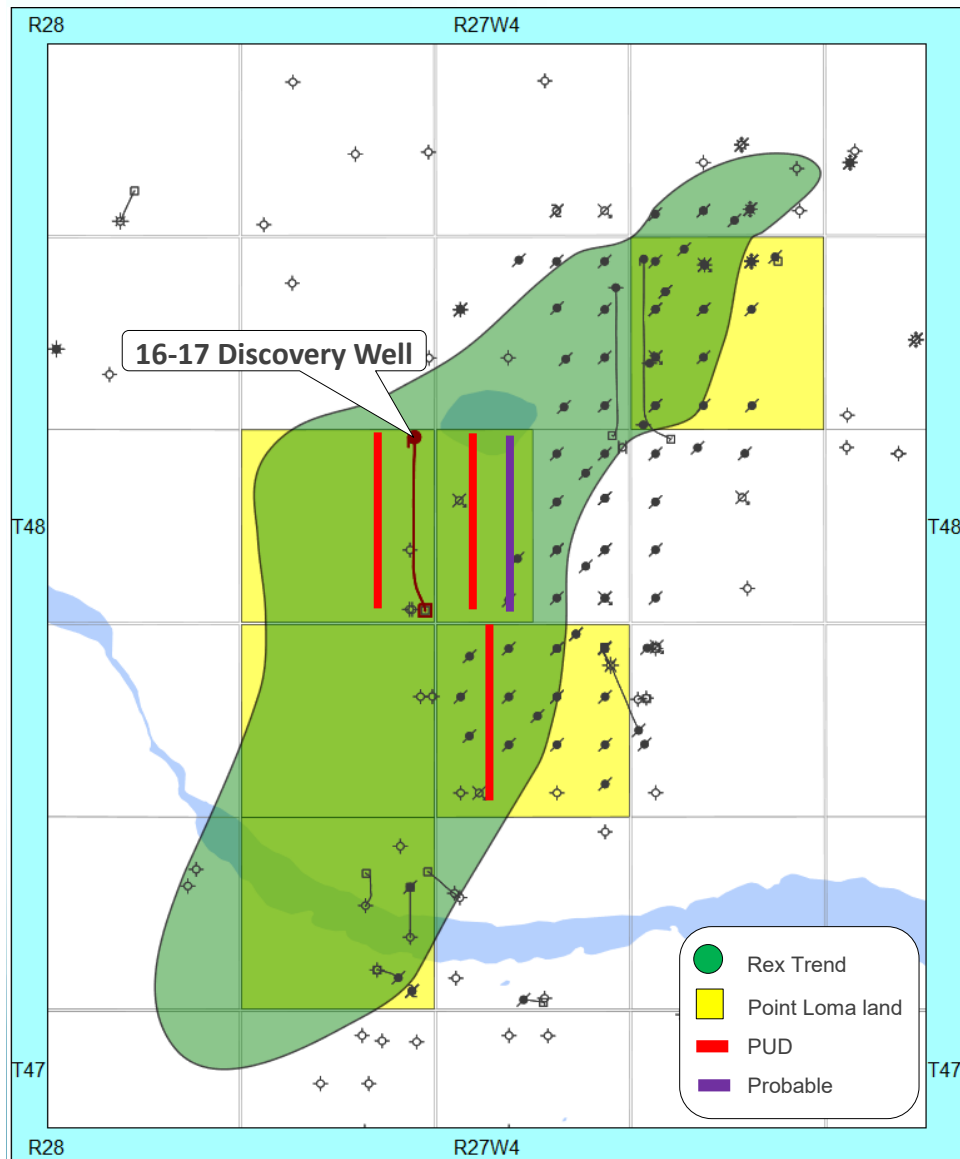


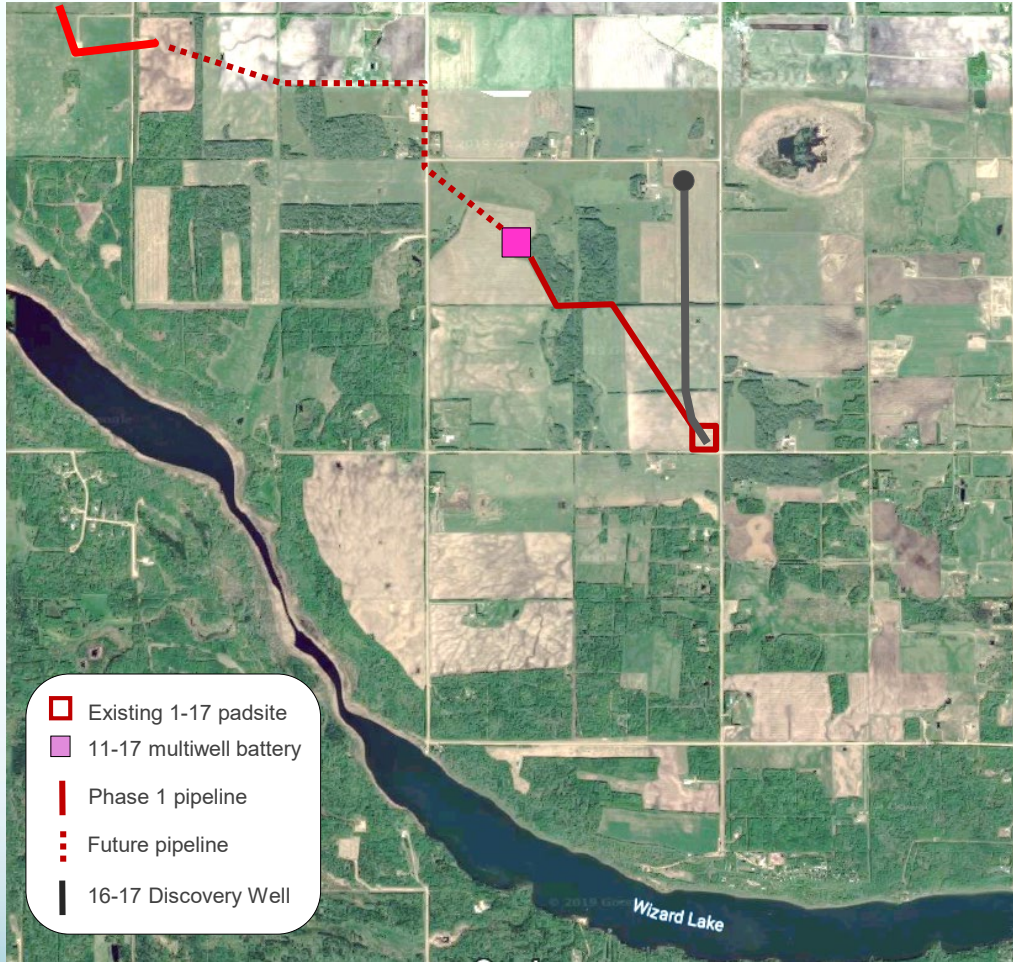
# Wizard Lake: Rex Oil Development Opportunities



<p>Drill \$1.2 MM Completion \$1.1 MM</p>	<p>400-500 bbl/d</p>
<p>Potential OOIP 60 MMbbl RF = 5%-10% or 20-30% with waterflood</p>	<p>14-17 Follow Up Opportunities</p>

- Point Loma 16-17-48-27W4 Discovery Well
- 525 mbbl net booked 2P reserves on discovery
- Now 20% of proven reserves
- PLX net 2,464 acres

# Wizard Lake: Rex Oil Infrastructure Project



## Final 24 hr rates

Oil: 305 bbl/d

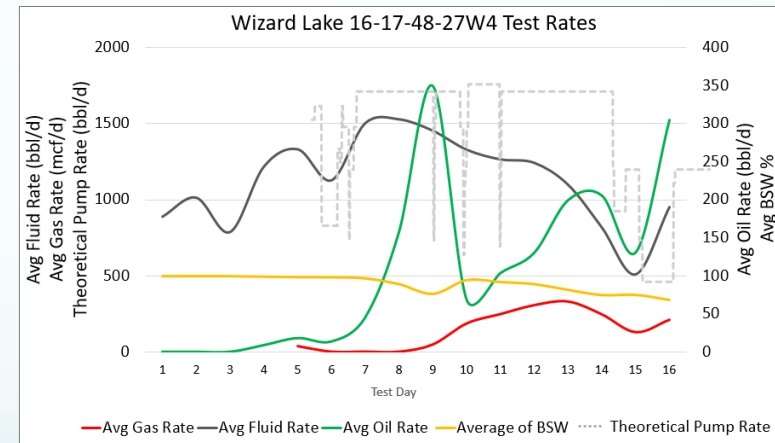
Gas: 213 mcf/d

Fluid: 950 bbl/d

\*sales oil was 55% above measured rates

## Anticipated IP

400-500 bbl/d oil



- **Phase 1:** 1.6km water and emulsion line built from 1-17 to multi-well temporary battery site at 11-17
- **Phase 2:** Upgrade 11-17 to permanent facility